



# UNISPLICE™ 413

AUTOMATIC LABEL SPLICING SYSTEM

PH

PHARMA

## Eliminate Downtime on your packaging line's Labeler

The UNISPLICE™ 413 technology detects when a pressure sensitive label roll needs to be replaced and automatically cuts and seamlessly joins the end of the expiring roll to the beginning of a new roll. Ensuring uninterrupted production, UNISPLICE maximizes efficiency, simplifies operation and eliminates downtime to achieve a superior ROI. UNISPLICE includes stand-alone electrical controls and provides high quality end-to-end label splices making it compatible and retrofittable with existing labelers in a wide range of applications and industries including pharmaceuticals, nutraceuticals, medical devices, cosmetics, personal care products, foods, chemicals and more.

### ADVANTAGES

- Eliminates downtime associated with:
  - Label roll changes
  - Inadequate label splices
  - Operator skill level
- Automatically splices labels with new label roll staged by operator
- Produces high quality end-to-end splice without an operator present
- Achieves ROI in productivity within months
- Includes stand-alone electrical controls for a retrofittable solution

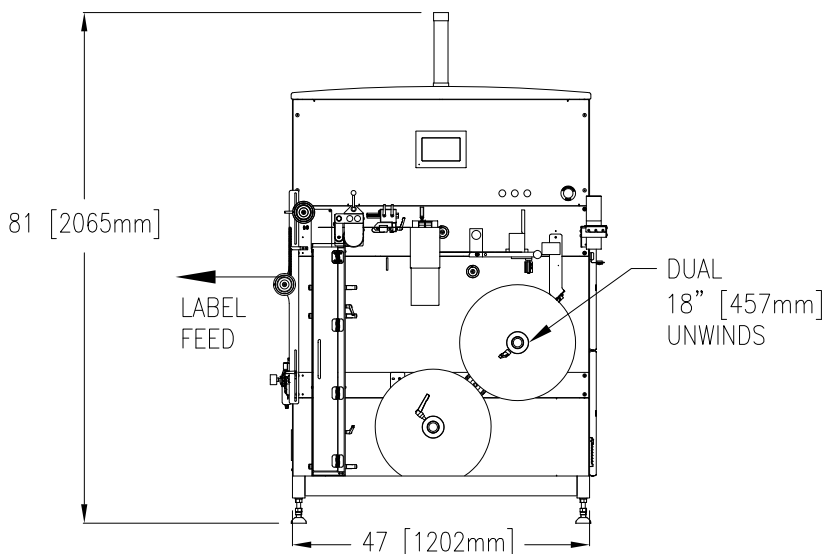
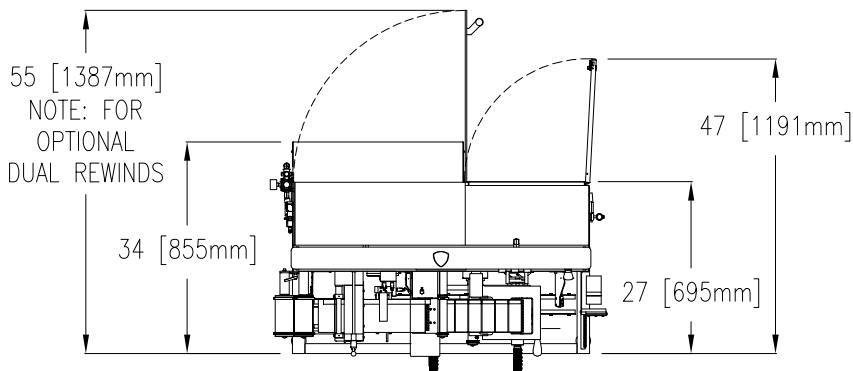
End-to-End Splice

## TYPICAL SPECIFICATIONS

<b>Max Label Roll Dia</b>	18" (356mm), Dual
<b>Label Roll Core Dia</b>	3" (76mm)
<b>Label Web Width</b>	0.625" (16mm) to 5.25" (133mm)
<b>Label Width</b>	0.500" (13mm) to 5.125" (130mm)
<b>Label Length</b>	1.000" (25mm to 12" (305mm)

<b>Label Web Material</b>	Paper or Film
<b>Maximum Output (standard)</b>	900 inches per minute (23 meters per minute)
<b>Maximum Output (with Festoon Option)</b>	3,000 inches per minute (76 meters per minute)

## STANDARD (LEFT HAND LABEL FEED) CONFIGURATION:



## OPTIONS

- Festoon high speed label web accumulator
- Dual automatic switching rewinds

